

FUJITSU Image Scanner fi-7240

The essential fi Series scanner with exceptional business performance



shaping tomorrow with you

■ fi-7240 Features

■ Outstanding paper feeding delivers reliable batch scanning regardless of the document condition

The new scanners allow the user to scan a wide variety of paper thicknesses (27 to 413 g/m²), as well as plastic cards with the same feeding mechanism inherited from our high-end models. In addition, Paper Protection constantly checks along the whole document length during scanning and automatically stops paper feeding when error occurs to avoid any damage to the document. All in all these deliver the reliable scanning experience expected from Fujitsu.

● Reliable Skew Reducer even when scanning a mixed size batch

The fi-7240 automatically detect the document size when scanning a mixed size batch. Furthermore, it is equipped with Skew Reducer to detect the alignment of scanned documents and correct paper skews to minimize missing the edge of the scanned image. Users can rest assured that the result will be good even when scanning documents that are not aligned correctly.



■ Fast scanning right at your desk

The fi-7240 scans at a speed of 40 ppm (A4, color, 200/300 dpi). Simply press the scan button and it will start scanning within a second. Scanning with the fi-7240 will not keep you, or your customers, waiting.

■ Scan brochures and other small booklets

The fi-7240 has a built-in flatbed (glass surface) that is able to scan thin documents or thick books which are impossible to scan using an ADF scanner.

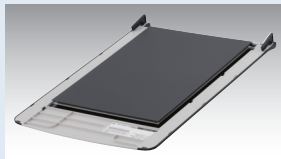


■ Automatically creates the most suitable high quality image data for OCR process

The PaperStream IP scanner driver, which supports TWAIN/ISIS, saves the inconvenience of fine adjusting the settings for the OCR process. It automatically converts the images into exceptionally clean images, accelerating OCR even when scanning wrinkled or soiled documents or documents with a background pattern.

■ Option: Black Document Pad

Attach the Black Document Pad to the flatbed to make scans with a black background. This enables the scanner to apply image processing like size detection and skew correction to a document scanned with the flatbed so that the resulting image data is properly sized to the original.



Black Document Pad (fi-728BK)

■ Option: Carrier Sheets

Carrier Sheets allow you to scan documents, photos or clippings larger than A4 size. Documents larger than A4 (such as A3 or B4) or photos and clippings that can be damaged easily can be digitized when using the Carrier Sheets.

* Carrier Sheets (5 sheets per set) can be purchased separately. (The Carrier Sheet should be replaced approximately every 500 scans)



A3 Carrier Sheets

■ fi-7240 Technical Specifications

Description		fi-7240
Supported operating systems		Windows® 8/8.1 (32-bit/64-bit), Windows® 7 (32-bit/64-bit), Windows Vista® (32-bit/64-bit), Windows Server® 2012 R2 (64-bit), Windows Server® 2012 (64-bit), Windows Server® 2008 R2 (64-bit), Windows Server® 2008 (32-bit/64-bit)
Scanner type		Flatbed (FB) and Automatic Document Feeder (ADF)
Scanning modes		Simplex / Duplex, Color / Grayscale / Monochrome
Image sensor type		Color CCD (Charge-coupled device) x 3 (front x 1, back x 1, Flatbed x 1)
Light source		White LED Array x 3 (front x 1, back x 1, Flatbed x 1)
Multifeed detection		Ultrasonic multi-feed detection sensor x 1, Paper detection sensor
Document size	Maximum	216 x 355.6 mm (8.5 x 14 in.)
	Minimum*1	50.8 x 54 mm (2 x 2.13 in.) (Landscape / Portrait)
	Long page scanning*2	216 x 5,588 mm (8.5 x 220 in.)
Paper weight (Thickness)*3	Paper	27 to 413 g/m ² (7.2 to 112 lbs) *A8 size: 127 to 209 g/m ² (34 to 56 lb)
	Plastic Card	1.4 mm or less*4
Scanning speed (A4 Portrait)*5	Color*6	Simplex: 40 ppm (200/300 dpi), Duplex: 80 ipm (200/300 dpi)
	Grayscale*6	
	Monochrome*7	
Paper chute capacity (A4 Landscape)*8		80 sheets (A4: 80 g/m ² or 20 lb)
Background colors		White / Black (Selectable)
Optical resolution		600 dpi
Output resolution*9	Color (24-bit)	50 to 600 dpi (adjustable by 1 dpi increments), 1,200 dpi (driver)*10
	Grayscale (8-bit)	
	Monochrome (1-bit)	
Output format	Color	24-bit
	Grayscale	8-bit
	Monochrome	1-bit
Internal video processing		65,536 levels (16-bit)
Interface		USB2.0
Connector shape		B type
Image processing functions		Multi image output, Automatic color detection, Blank page detection, Dynamic threshold (iDTC), Advanced DTC, SDTC, Error diffusion, Halftone, De-Screen, Emphasis, Color cleanup, Dropout color (None /Red /Green /Blue /Saturation), sRGB output, Hole punch removal, Index tab cropping, Split image, De-Skew, Edge correction, Vertical streaks reduction, Automatic page size detection
Power requirements		AC 100 to 240 V ±10%
Power consumption		Operating: 39 W or less Sleep mode: 1.8 W or less Auto standby (OFF) mode: 0.35 W or less
Operating environment		Temperature: 5 to 35 °C (41 to 95 °F) Relative humidity: 20 to 80% (Non-condensing)
Dimensions: Width x Depth x Height*11		300 x 577 x 234 mm (11.81 x 22.72 x 9.21 in.)
Weight		8.8 kg (19.4 lb)
Included software / drivers		PaperStream IP (TWAIN/TWAIN x64/ISIS), Software Operation Panel, Error Recovery Guide, PaperStream Capture, ScanSnap Manager for fi Series*12, Scan to Microsoft SharePoint*12, ABBYY FineReader for ScanSnap™*12, Scanner Central Admin Agent
Environmental compliance		ENERGY STAR® and RoHS
Included items		ADF paper chute, AC cable, AC adapter, USB cable, Setup DVD-ROM

*1 The minimum scanning area only applies to using the ADF. There is no limitation when using the flatbed.
 *2 Capable of scanning documents that exceed Legal sheets in length. Long page scanning supports documents with a length of up to 5,588 mm (220 in.) when the resolution is set to 200 dpi or less.
 *3 The paper weight only applies to using the ADF. There is no limitation when using the flatbed.
 *4 Capable of scanning up to 3 cards at a time. (Note: does not support multi-embossed card feedability.)
 *5 Actual scanning speeds are affected by data transmission and software processing times.
 *6 Indicated speeds are from using JPEG compression.
 *7 Indicated speeds are from using TIFF G4 compression.
 *8 Maximum capacity varies, depending upon paper weight.
 *9 Selectable maximum density may vary depending on the length of scanned document.
 *10 Scanning limitations brought about by scanning mode, document size and available memory may occur when scanning at higher resolutions (600 dpi or higher).
 *11 Excluding the ADF paper chute.
 *12 The software can be downloaded from the website designated in the Setup DVD-ROM.

■ Options

Description	Parts number	Comments
Black Document Pad (fi-728BK)	PA03670-D801	This is a flatbed black background attachment. Use of this option facilitates the De-skew and Automatic page size detection of images scanned with flatbed scanners.
Carrier Sheets	PA03360-0013	Each package contains 5 carrier sheets. It is recommended that each carrier sheet be replaced after it has been used for 500 scans.

■ Consumables

Description	Parts number	Comments
Brake Roller	PA03670-0001	Lifetime: Every 200,000 sheets or one year. These rollers separate documents as they are being fed into the scanner.
Pick Roller	PA03670-0002	Lifetime: Every 200,000 sheets or one year. These rollers feed documents into the scanner.

■ Trademarks

- * ABBYY and FineReader are trademarks of ABBYY Software, Ltd. which may be registered in some jurisdictions.
- * ISIS is a registered trademark of EMC Corporation in the United States.
- * Microsoft, Windows, Windows Server, Windows Vista and SharePoint are either registered trademarks or trademarks of Microsoft Corporation in the United States and/or other countries.
- * Other company names and product names are the registered trademarks or trademarks of the respective companies.

Visit the fi Series web site for ordering and purchasing information

<http://imagescanner.fujitsu.com>

⚠ Safety Precautions

- Be sure to carefully read all safety precautions prior to using this product and use this device as instructed.
- Do not place this device in wet, moist, steamy, dusty or oily areas. Using this product under such conditions may result in electrical shock, fire or damage to this product.
- Be sure to limit the use of this product to listed power ratings.



PFU Limited, a Fujitsu company, has determined that this product meets the ENERGY STAR® guidelines for energy efficiency. ENERGY STAR® is a registered trademark of the United States.