



ScanSnap iX500

- The scanner that intuitively guides you through every step of the scanning process
- Access your documents anywhere and anytime
 - Scan to and view across a range of popular cloud services
 - Wirelessly scan to your PC, Mac, iPad® / iPhone®, Android™ and Kindle™ devices
- A host of automated settings designed for effortless scanning
- Scan your everyday documents from business cards to A4 and even A3
- Scan to: Word, Excel®, E-mail and SharePoint® amongst others
- Free 3 year warranty if you register your product

ScanSnap
iX500



iOS



shaping tomorrow with you

FUJITSU

ScanSnap iX500

Easily digitises various document types



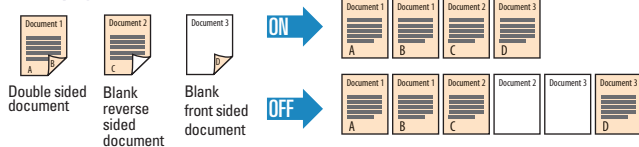
“Total support” from digitisation through to application

Simple, Speedy & Compact!

Easily digitises paper based data with the touch of one button

The iX500 facilitates simple PDF generation with the following one touch activated automatic settings and automatic image correction functions:

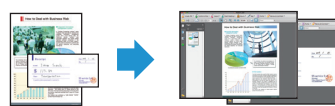
Blank page detection



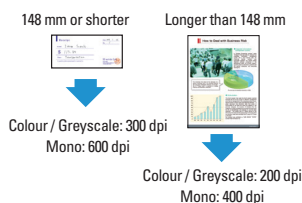
Auto deskew and auto orientation



Auto-size detection



Automatic resolution function



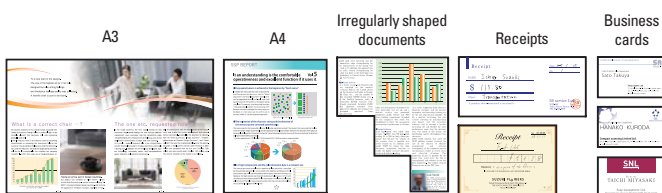
Intelligent auto colour detection



Speedy

Just place a document in the scanner's paper chute, press the “scan” button, and the iX500 starts scanning right away. Furthermore, the iX500 is able to simultaneously scan up to 50 two-sided pages at a speedy 25 pages per minute.

Scans everything from business cards to A3 sized documents



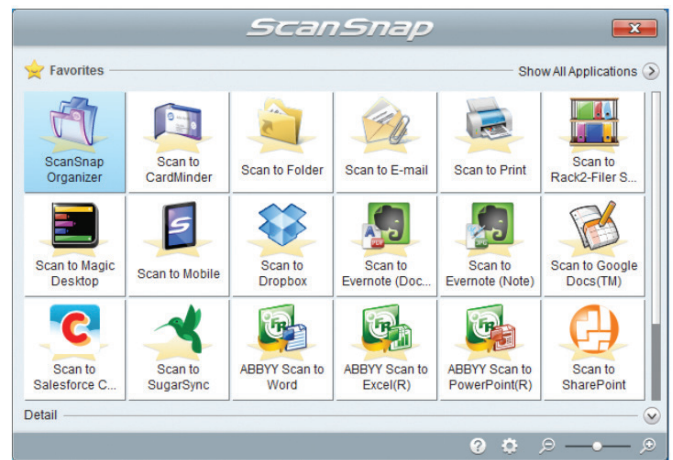
ScanSnap Carrier Sheets

Use of a carrier sheet enables iX500 users to digitise larger documents (A3/B4), as well as magazine and newspaper clippings and photographs. Such document containing carrier sheets can be scanned successively or mixed in with regular paper documents.

Intuitive “Quick Menu” for intelligent and flexible operation

The Quick Menu can be set up to display your ‘Favourite’ scanning destinations or will ‘Recommended’ an application; eg. Scan a business card which will then be automatically recognised and a list of business card related applications will be recommended.

Quick Menu for Windows® OS



Quick Menu for Mac OS Users



Create editable Microsoft® Word / Excel® / PowerPoint® files

Bundled **Top-class OCR engine**
ABBYY FineReader for ScanSnap™

Document received

>> Document scanned

Now make your paper productive



ScanSnap Folder, simplifying scanning to your favourite applications

Does your Windows application have an import or browse command? If so you can now easily scan directly to this application even when no scanning interface is available assuming it supports pdf or jpg. Simply browse to the new 'ScanSnap Folder' within your local computer, hit the blue scan button and your document will then be automatically imported into your application and then deleted from 'ScanSnap Folder'. For further information please visit www.ScanSnapit.com

Generates editable PDF files

- Comes bundled with Adobe® Acrobat® Standard, which enables users to move beyond merely "seeing" and "printing" generated data, to editing generated PDF files however they like
- Generates password and digital ID attached PDF files that are ideal for safeguarding personal information and other confidential information that needs to be protected

Bundled Windows OS only Perfect for everything from PDF creation to application
ADOBE® ACROBAT® STANDARD

Seamless linking to Cloud services

The iX500 offers direct interaction with your cloud service allowing you to access your documents from any device and at any time or anywhere. The iX500 supports direct scanning to Evernote, Dropbox, Google Docs™, Salesforce and SugarSync.

Efficiently organises business card information

- Scans large volumes of business cards into digital business card holders
- Enables users to enter scanned data into Excel®, Outlook Express, Salesforce and other databases for future reference

Business card scanning software
Bundled **CardMinder™**

ScanSnap iX500 Deluxe includes Rack2-Filer Smart and Magic Desktop Windows only

Rack2-Filer Smart allows you to save your scanned and existing digital data in realistic looking bookcases and files that can then be easily retrieved and flipped through the way you may with regular files.

Access and utilise this data anywhere whether through your cloud services or if via a smart device, you can edit, add a comment and then save or redistribute.

Magic Desktop enables you to organise / edit image files or scan data imported from ScanSnap in a workspace simulating an actual desktop. You can seamlessly organise your work by categorising data per group and you can also share information with a group with the communication function that links with Facebook.

Scan via WiFi to your devices

The iX500 now offers the unique ability to link directly with your PC, Mac, iPad®, iPhone®, Android™ and Kindle™ devices via a WiFi connection.



Fitted with a newly developed GI processing engine the iX500 means that users can now wirelessly operate the scanner via their Smart Device and the ScanSnap Connect Application* creating high quality scanned images that can be saved to the device, manipulated, retrieved at a later date and distributed.

* ScanSnap Connect Application is available as a free download from the official application distribution service of the device (Google Play, Apple App Store and Amazon App Store).

Enhanced scanning environment centred around a new "GI" image processing engine



The iX500 comes with an inbuilt dual core CPU that takes ScanSnap to that next performance level

- Scan wirelessly to a PC or Mac as well as to a smart device
- Enhanced scanning speeds independent of target device and connectivity
- Offers a paper feeding performance that you would expect with a high speed, high volume device, enhanced through USB 3.0 support

* ScanSnap Connect Application is available as a free download from the official application distribution service of the device (Google Play, Apple App Store and Amazon App Store).

ScanSnap iX500 Specifications



Model		ScanSnap iX500
Supported operating systems		Supports Windows and Mac OS, see http://www.scansnap.fujitsu.com/g-support/en for further information
Scanner type		ADF (automatic document feeder)
Scanning modes		Simplex / Duplex scanning, Colour / Greyscale / Mono / Automatic (colour / greyscale / mono detection) ¹³
Image sensor		CIS (contact image sensor) x 2
Light source		3 Colour LED (red / green / blue)
Scanning speed ¹¹ (A4 Portrait)	Auto mode ¹²	Simplex: 25 ppm, Duplex: 50 ipm
	Normal mode	Simplex (colour / greyscale 150 dpi) (mono 300 dpi): 25 ppm, Duplex (colour / greyscale 150 dpi) (mono 300 dpi): 50 ipm
	Better mode	Simplex (colour / greyscale 200 dpi) (mono 400 dpi): 25 ppm, Duplex (colour / greyscale 200 dpi) (mono 400 dpi): 50 ipm
	Best mode	Simplex (colour / greyscale 300 dpi) (mono 600 dpi): 25 ppm, Duplex (colour / greyscale 300 dpi) (mono 600 dpi): 50 ipm
	Excellent mode ¹³	Simplex (colour / greyscale 600 dpi) (mono 1,200 dpi): 7 ppm, Duplex (colour / greyscale 600 dpi) (mono 1,200 dpi): 14 ipm
Document size	Normal mode without carrier sheet	A4, A5, A6, B5, B6, business card, postcard, letter, legal and custom sizes Minimum : 50.8 x 50.8 mm / Maximum : 216 x 360 mm / Automatically recognises document size
	Normal mode with carrier sheet ¹³	Use of a carrier sheet permits the scanning of A3, B4, double letter and photographs as well as the document sizes that are listed above
	Long paper scanning ¹⁴	863 mm in length
Recommended paper weight		40 to 209 g/m ² / A8 size: 127 to 209 g/m ² Cards can be scanned (portrait / landscape), non-embossed : 0.76 mm or less / embossed (ISO7810 conforming)
Paper chute capacity ¹⁵		50 sheets (A4: 80 g/m ²)
Interface ¹⁶		USB 3.0 (USB 2.0, USB 1.1 Supported)
WiFi interface ¹⁷	Observed standards	IEEE802.11b / IEEE802.11g / IEEE802.11n
	Communication mode	Infrastructure mode
	Frequency ¹⁸	2.412 GHz to 2.462 GHz / 2.412 GHz to 2.472 GHz
	Communication distance	Indoors, 50 m (recommended: indoors, within 25 m) May vary depending on the surrounding environment and the access point to be connected
	Security ¹⁹	WPA-PSK (TKIP/AES/AUTO), WPA2-PSK (AES), WPA-PSK, WPA2-PSK (AES/AUTO), WPA (TKIP/AES/AUTO), WPA2 (AES), WPA, WPA2 (AES/AUTO), SharedKey (WEP 64-bit/128-bit), 802.1X (WEP 64-bit/128-bit)
Easy installation	WPS2.0 supported (button / PIN code)	
Power requirements		AC 100 to 240V, 50 / 60Hz
Power consumption	USB connection	Operating: 20W or less (Sleep mode: 1.6W or less) Auto Standby (OFF) mode: 0.4W or less
	WiFi connection	Operating: 20W or less (Sleep mode: 2.5W or less) Auto Standby (OFF) mode: 0.4W or less
Operating environment		Temperature: 5 to 35 °C / Relative humidity: 20 to 80 % (Non-condensing)
Dimensions (W x D x H) ¹⁰ / Weight		292 x 159 x 168 mm / 3kg
Environmental compliance		ENERGY STAR [®] / RoHS ¹¹ / Ecodesign ¹²
Driver		Specific driver (Does not support TWAIN / ISIS [™])
Other		Double-feed detection Ultrasonic double-feed detection sensor

- ¹¹ Scanning speeds may vary due to the system environment used
- ¹² Documents measuring approximately 148 mm in length or less are scanned in "Best mode", while other documents are scanned in "Better mode"
- ¹³ Only computer connection
- ¹⁴ The iX500 is capable of scanning documents that exceed A4 size in length. This function is available for all modes except Excellent mode
- ¹⁵ Maximum capacity varies, depending upon paper weight
- ¹⁶ Some computers may not recognise the iX500 when it is connected to a USB 3.0 port. In this case, please use a USB 2.0 port
- ¹⁷ Only Android[™] / iOS in case of WiFi connection
- ¹⁸ Values depends on country
- ¹⁹ IEEE802.1X Authentication is not supported
- ²⁰ Excluding the stacker and other external attachments
- ²¹ PFU LIMITED, a Fujitsu company, has determined that this product meets RoHS requirements (2011/65/EU)
- ²² PFU LIMITED, a Fujitsu company, has determined that this product meets Ecodesign Directive requirements (2009/125/EC)
- ²³ The software is available to be downloaded from the ScanSnap website <http://scansnap.fujitsu.com/g-support/en/>

Bundled software	Purpose	Software	PC Compatible	MAC Compatible
	Scanner driver	ScanSnap Manager	✓	✓
	File management	ScanSnap Organizer	✓	✓
	Business card management	CardMinder [™]	✓	✓
	PDF editing	Adobe [®] Acrobat [®] Standard	✓	✓
	Text recognition	ABBYY FineReader for ScanSnap [™]	✓	✓
	Cloud	Evernote	✓	✓
	ECM linkage software	Scan to Microsoft [®] SharePoint [™] ¹³	✓	✓



"Adobe", "Acrobat" and the Adobe PDF logo are either registered trademarks or trademarks of Adobe Systems Incorporated in the United States and/or other countries.



ENERGY STAR[®] compliant

Consumables and options	Part number	Remarks
Consumable kit	CON-5656-001A	1 x pick roller; 1 x brake roller; total maximum lifetime 200,000 documents or 1 year
Cleaning kit	SC-CLE-SS	24 cleaning fluid impregnated wipes
Carrier sheets	PA03360-0013	5 carrier sheets
ScanSnap bag	PA03951-0651	Intended for ScanSnap iX500, S1500, S1500M, S510, S510M, S500, S500M

All names, manufacturer names, brand and product designations are subject to special trademark rights and are manufacturer's trademarks and/or registered brands of their respective owners. All indications are non-binding. Technical data is subject to change without prior notification. Apple iPad, iPhone, iPod touch and iTunes are trademarks of Apple Inc., registered in the U.S. and other countries. App Store is a service mark of Apple Inc.

PFU Imaging Solutions Europe Limited
Hayes Park Central
Hayes End Road, Hayes
Middlesex UB4 8FE
United Kingdom

Tel: +44 (0)20 8573 4444
Fax: +44 (0)20 8573 2643

www.ScanSnapit.com

PFU Imaging Solutions Europe Limited
Frankfurter Ring 211
80807 Munich
Germany

Tel: +49 (0)89 32378 0
Fax: +49 (0)89 32378 100

PFU Imaging Solutions Europe Limited
Via Nazario Sauro, 38
20099 Sesto San Giovanni (MI)
Italy

Tel: +39 0226294 1
Fax: +39 0226294 201

